



# Introduction to TI Navigator 2.x

John Hanna, T<sup>3</sup> – *Teachers Teaching with Technology*

[www.johnhanna.us](http://www.johnhanna.us)

[jhanna@ti.com](mailto:jhanna@ti.com)

## Components:

- Hardware included: network adapter, access point, hubs, cables, chargers, power supplies
- Hardware *not* included: computer, projector, calculators
- Software:
  - TI-Navigator 2.x (includes TI-Navigator, TI Network Manager, and Class Analysis)
  - Learning Check Creator
  - TI Connect

## Starting TI-Navigator: look for the Ti-Navigator Icon on the desktop.

Tip: check the Network Manager to make sure all connections are working

Will work without any network hardware. Runs in simulation mode with Silver Graph-Link cable.

## The “TI-Navigator Classroom”:

- One class list (no duplicate user IDs)
- Student can be in multiple classes
- Importing students from a text file... only one shot!

## Students:

One calculator per student. Each gets a unique username and password for login (using the NavNet App). Once logged in, they remain until teacher “Ends the Class”



ACTIVITY CENTER: Controlled by teacher  
NETWORK APPS: the Learning Check App  
TRANSFERS: Automatic or Send to Teacher  
EXIT APP: to use calculator; still logged in, though

## Class properties:

Only the location of ‘unprompted’ files

## Teacher calculator

In the Navigator software: Teacher Preferences sets Username and Password for teacher to use on a calculator

Logs in, but does not have a class icon

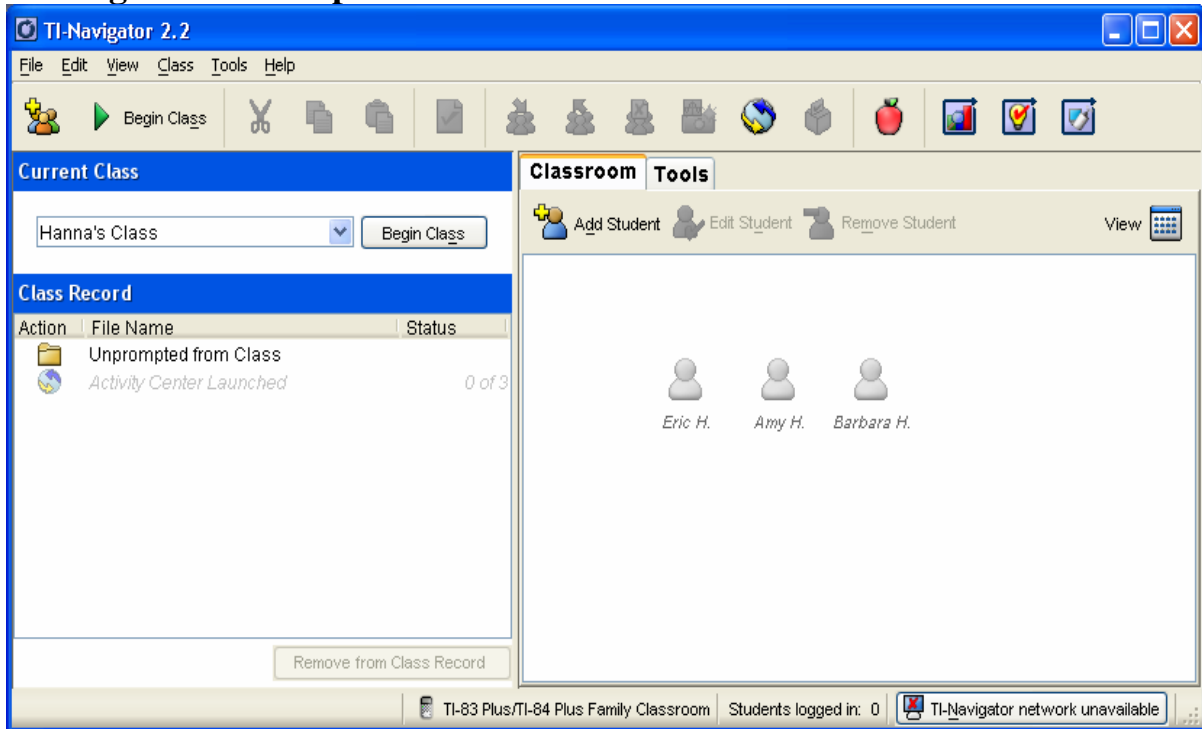
Can send files to class from teacher calculator

Participates in Activity Center as Teacher cursor

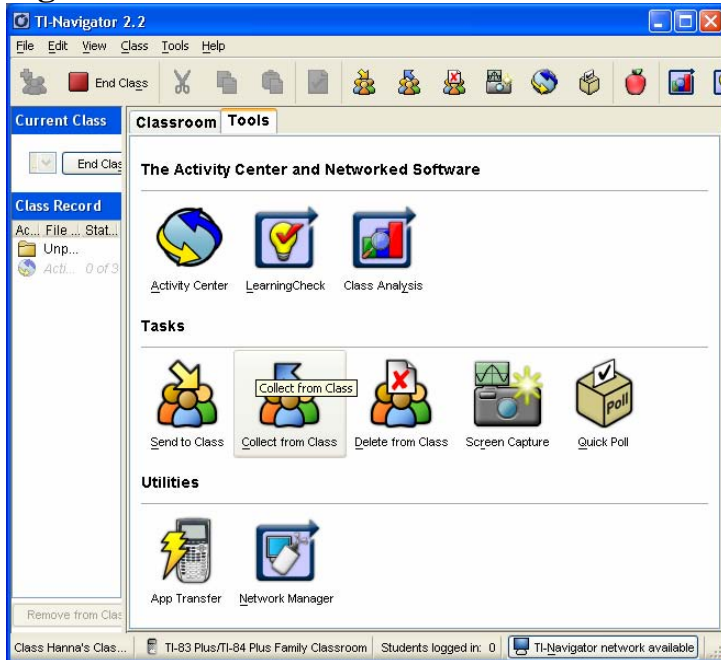
Can do a quick poll from teacher calculator

Quitting NavNet logs teacher out

## The TI-Navigator “Desktop”:



## TI-Navigator “Tools”:



## Activity Center

Lets students participate in teacher's computer to contribute points, equations, or lists  
Teacher-centered

## Learning Check Creator

Computer software for editing assessments (learning check documents). Students use their Learning Check App to complete assignment. See **Class Analysis**

## Class Analysis

Computer software to collect and *grade* Learning Check assessments.  
Has a built-in 'slideshow' to review responses

## App Transfer

Utility for transferring Apps to the class calculators. No need to begin class or log in

## Network Manager

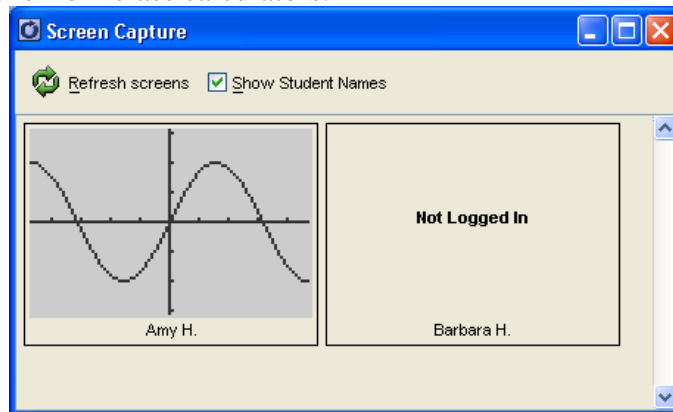
Utility for making sure the network is functioning properly and to add hubs

## Send to Class, Collect from Class, Delete from Class

Tools to manage class calculators' files from teacher's computer

## Screen Capture

Utility to collect screens from class calculators:



## Quick Poll

Ungraded answer collection and sharing (via projector) utility:

