

Navigating

TI-Navigator



Changing the Mathematics and Science Classroom

presented by

John Hanna

jhanna@ti.com

<http://www.johnhanna.us>

T³ • Teachers Teaching with Technology

T³ Regional Conference, Wilmington, DE

March 31, 2006



Introduction to TI Navigator 2.x

John Hanna, T³ – *Teachers Teaching with Technology*

www.johnhanna.us

jhanna@ti.com

Components:

- Hardware included: network adapter, access point, hubs, cables, chargers, power supplies
- Hardware *not* included: computer, projector, calculators
- Software included:
 - TI-Navigator 2.x (includes TI-Navigator, TI Network Manager, and Class Analysis)
 - Learning Check Creator
 - TI Connect
 - Calculator Apps: NavNet, LearnChk, θnavstk, θAlgACT

Starting TI-Navigator: look for the TI-Navigator Icon on the desktop.

Tip: check the Network Manager to make sure all connections are working

Will work without any network hardware. Runs in simulation mode with Silver Graph-Link cable.

The TI-Navigator Classroom:

- One class list (no duplicate user IDs)
- A Student can be in multiple classes
- Importing students from a text file... only one shot

Students:

One calculator per student. Each gets a *unique* username and password for login (using the NavNet App). Once logged in, they remain until teacher “Ends the Class”



ACTIVITY CENTER: Controlled by teacher

NETWORK APPS: the Learning Check App (**LearnChk**)

TRANSFERS: Automatic or Send to Teacher (unprompted)

EXIT APP: to use the calculator; **still logged in**, though

Class Properties:

Only sets the location of the ‘unprompted’ files

The Teacher Calculator

In the Navigator computer software: **Teacher Preferences** sets Username and Password for teacher to use on a calculator

Logs in, but does not have a class icon

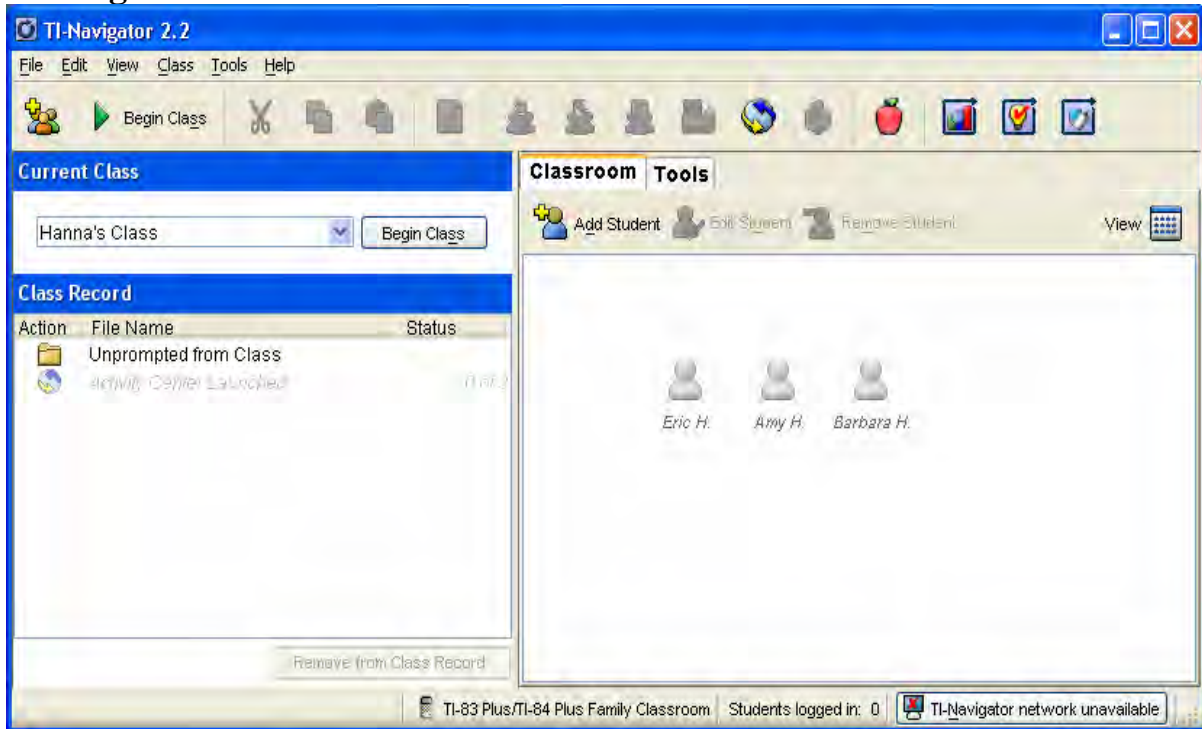
Can send files to class from teacher calculator

Participates in Activity Center as Teacher cursor

Can do a Quick Poll from teacher calculator, but does not participate in Quick Polls

Quitting NavNet *logs teacher out* (a security feature)

The TI-Navigator Classroom:



The TI-Navigator Tools:





Activity Center

Lets students participate in teacher's computer to contribute points, equations, or lists
Teacher-centered



Learning Check Creator

Computer software for editing assessments (learning check documents). Students use their Learning Check App to complete assignment. See **Class Analysis**



Class Analysis

Computer software to collect and *grade* Learning Check assessments.
Has a built-in 'slideshow' to review responses



App Transfer

Utility for transferring Apps to the class calculators. No need to begin class or log in



Network Manager

Utility for making sure the network is functioning properly and to add hubs



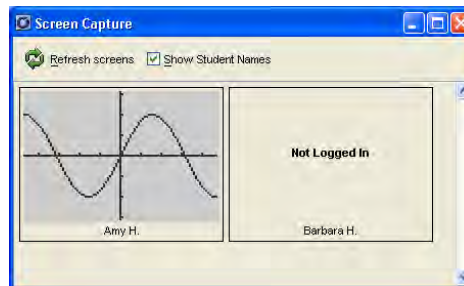
Send to Class, Collect from Class, Delete from Class

Tools to manage class calculators' files from teacher's computer



Screen Capture

Utility to collect screens from class calculators:



Quick Poll

Un-graded answer collection and sharing (via projector) utility:

