

Grab It Quick!

John Hanna

jhanna@teaneck.k12.nj.us

Files you'll need:

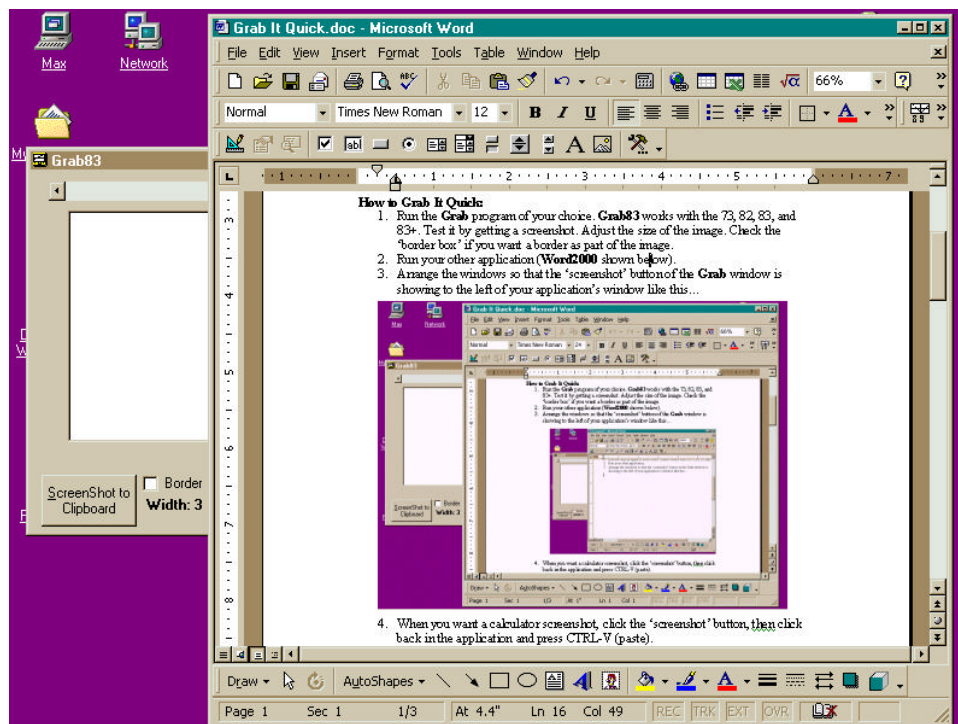
Grab83, Grab89, Grab92 executables. Get them from my Website at

<http://www.bergen.org/~tejohhan/iview.html>

MSCOMM32.OCX and MSVBVM60.DLL. these are Windows support files and belong in your windows\system folder. Get them from Microsoft's website.

How to Grab It Quick:

1. Run the **Grab** program of your choice. **Grab83** works with the 73, 82, 83, and 83+. Test it by getting a screenshot. Adjust the size of the image. Check the 'border box' if you want a border as part of the image.
2. Run your other application (**Word2000** shown below).
3. Arrange the windows so that the 'screenshot' button of the **Grab** window is showing to the left of your application's window like this...



4. When you want a calculator screenshot, click the 'screenshot' button, then click back in the application and press CTRL-V (paste).

©2000 John Hanna

T³ Teachers Teaching with Technology International Conference
March, 2000 in Dallas, Texas

A Word® macro:

```
Sub Grb83()  
    AppActivate "Grab83"  
    DoEvents  
    SendKeys "%s", True  
    DoEvents  
    AppActivate "Microsoft Word"  
    Selection.Paste  
End Sub
```

To **make this macro** in **Word2000**, choose *Tools/Macro/Visual Basic Editor*. Type the code above and exit the VB environment.

To **use the macro**, *make sure Grab83 is running*. Choose *Tools/Macro/Macros*. In the dialog box, choose the macro and press the **Run** button.

To **assign a 'shortcut key'** to this macro, use *Tools/Customize*, press the **'Keyboard'** button and find **'Macros'** in the left-hand list. Find your macro in the right-hand list, click in the Keyboard shortcut text box and press the key combination that you want to use. Be careful not to use one that already does something else, such as CTRL-P for Print.

To **make a 'toolbar button'**, use *Tools/Customize*, click the **'Commands'** tab, find **'Macros'** in the left-hand list, click on *your macro* in the right-hand list and drag it to the place on the toolbar where you want the button. You can then click on the **Customize** button to change your macro button's appearance.

An Explanation of the macro's statements, if you care:

AppActivate "Grab83"	switch to Grab83
DoEvents	tell Windows to do it
SendKeys "%s", True	presses ALT-S for a
DoEvents	screenshot
AppActivate "Microsoft Word"	switch back to Word
Selection.Paste	paste the image

A Graphics Primer

Computer graphics files come in many flavors: BMP, JPG, and GIF are the most common, but you'll also find WMF, ICO, RLE, and many, many others. A good graphics program can convert any of these formats to any other format. I like **Paint Shop Pro** (www.jasc.com). My colleague Ken Zollo prefers **IRFANVIEW** (softwarecenter.net/irfanview).

Calculator PICTURE files are stored in a format unique to the TI calculators. When you upload a PIC file from your calculator to the computer using Graph-Link, the image is stored in a file called (assuming you are using a TI-83) Pic0.83i.

Use **IVIEW** to edit PIC files and to convert other graphics files into PIC file format to send to the calculator. You can also change colors of the calculator pictures for inclusion in documents, Web pages, and presentations.

Get the files from : www.bergen.org/~tejohhan/iview.html

Read the **IVIEW** Web page for more information!

Run the downloaded "exe" file to install the software.

Run the software...

